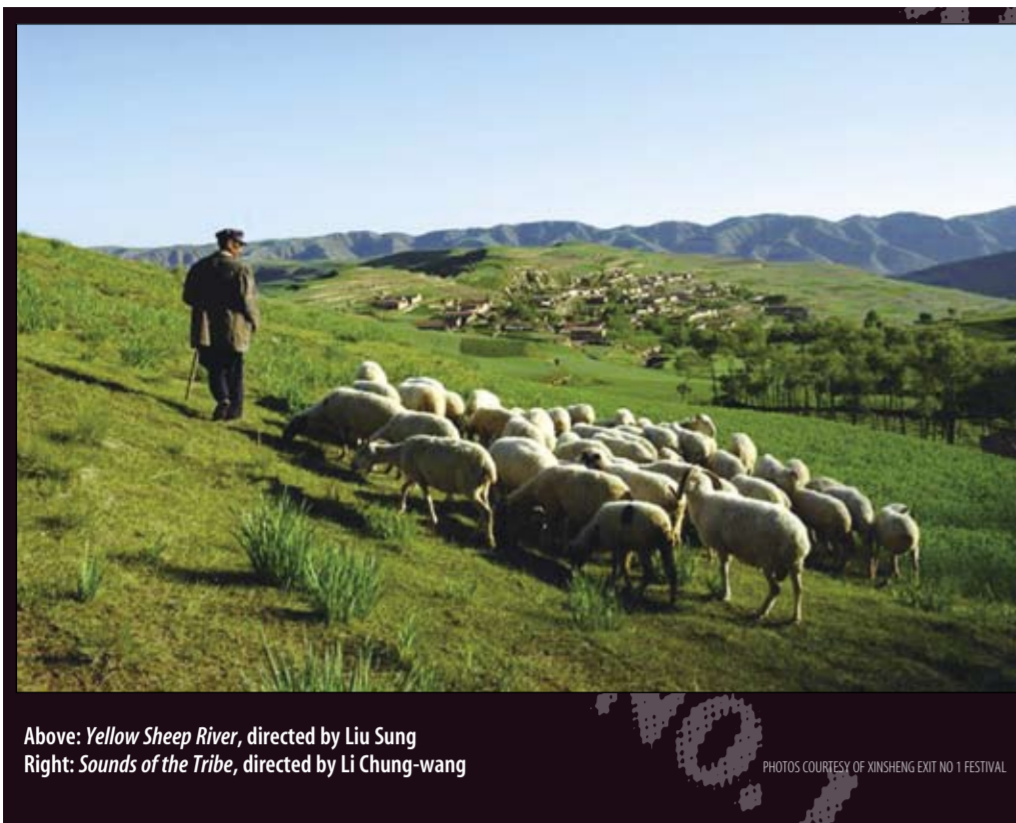


BY HO YI

FILM FESTIVAL

BY DAVID CHEN

MUSIC



Above: *Yellow Sheep River*, directed by Liu Sung
Right: *Sounds of the Tribe*, directed by Li Chung-wang

PHOTOS COURTESY OF XINSHENG EXIT NO.1 FESTIVAL

FESTIVAL NOTES:

WHAT: Xinsheng Exit No. 1 Festival (新生一號出口影展)
WHEN: Every Thursday at 7pm until Dec. 17
WHERE: Taipei Stock (倉庫藝文空間), 3F, 34, Bade Rd. Sec 1, Taipei City (台北市八德路一段34號3F)
ADMISSION: NT\$1,000 for 12 screenings, NT\$100 per screening at the door



Located above a gadget emporium on Bade Road (八德路) across from the revived Huashan 1914 Creative Park (華山創意園區) (formerly known as Huashan Culture Park, 華山文化園區), Taipei Stock, a renovated bank warehouse that opened in May of last year as a cultural space, hosts lectures, exhibitions, poetry readings, theatrical productions and music performances, as well as the Xinsheng Exit No. 1 Festival, a documentary showcase at which filmmakers meet audiences.

Taipei Stock has held two editions of the festival, which organizers intend to make a permanent fixture on the capital's cinematic calendar, since its inception in October last year. The current installment comprises 12 documentary works and runs through Dec. 17 with screenings every Thursday.

As festival curator Lin Mu-tsai (林木材) aims to set up a platform to re-examine and learn from the works of the past, the lineup focuses on old rather than new productions.

"Films made 10 years ago may be long

Oldies but goodies

forgotten and have little chance of public exposure," Lin said. "By showing them, we may be able to give them a new lease on life, hence the festival's name [*xinsheng* (新生), which means "new life" in Chinese.]

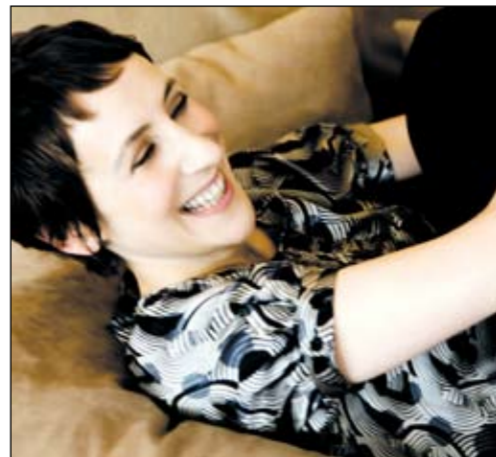
The program's films are categorized under two themes. Section one comprises six works that focus on regional issues or past disasters and includes *V.I (SARS病例一號)*, which follows the first person to contract SARS in Taiwan, and *Yellow Sheep River* (黃羊川), which documents village life on the Loess Plateau in China without the aid of dialogue or interviews.

The second segment screens works made mostly by female filmmakers, including the first local documentary to win an award at Japan's Yamagata International Documentary Film Festival, *The Lost Kingdom (消失的王國一拱樂社)*, director Lee Hsiang-hsiu's (李香秀) study on a legendary Taiwanese opera troupe that was popular in the 1970s, and 1997's *Swimming on the Highway (在高速公路上游泳)*.

After each screening, filmmakers will attend question-and-answer sessions to discuss their work with audiences.

New entries are welcome all year round. To make a submission, call (02) 2396-9092 or visit www.wretch.cc/blog/newlife001.

She swings to poetry



Stacey Kent plays a sold-out show tonight at the National Concert Hall.

PHOTO COURTESY OF THE NATIONAL CONCERT HALL

American jazz singer Stacey Kent, who appears tonight at Taipei's National Concert Hall, says she had an unforgettable time when she played here four years ago. "It was one of the most electrifying, emotional, beautiful nights, ever," she said on the phone with the *Taipei Times* from her home in London.

Her audience in 2005 must have felt the same way and spread the word, because her show tonight was already sold out last month. Kent's unconventional rise to international jazz stardom has all the charm and romance of a Hollywood script, as her press kit suggests. She was a graduate student in Europe, working towards her master's degree in comparative literature, with no ambitions to become a professional singer. But a chance meeting in Oxford with British saxophonist Jim Tomlinson turned into a love affair, which blossomed into a marriage and musical collaboration. Now she and Tomlinson record for Blue Note Records and tour internationally.

She enjoys the praise of a wide range of luminaries, from Oscar-winning songwriter Jay Livingston (co-author of the Christmas tune *Silver Bells*) to Clint Eastwood, who invited her to sing at his 70th birthday party, and even Steven Tyler of Aerosmith.

One notable admirer, British novelist Kazuo Ishiguro, has even become a collaborator. He wrote the lyrics to four songs on Kent's 2007

album *Breakfast on the Morning Tram*, which earned a Grammy nomination for best jazz vocalist and hit platinum in France, where she is immensely popular (the Ishiguro-penned track, *The Ice Hotel*, is well worth checking out on Kent's MySpace page).

The album, which is Kent's most personal and ambitious work to date, showcases her delicate, yet sophisticated voice. Her crisp diction and near-conversational style of singing show a strong folk music sensibility.

"I think that what I do as a singer, which is such a communicative thing to do, to share a story — has everything to do my early days as a literature student and even as a grammar student," she said.

Kent's somewhat unconventional path to jazz has also shaped her repertoire. She draws from the Great American Songbook like most jazz vocalists, but also performs songs by rock artists like Paul Simon (*Bookends*) and Stevie Nicks (*LoveStory*).

Storytelling "comes naturally" to Kent. "I want people to come on a journey with me ... It can be any genre as long as the story is conveyed to me, because I'm not only a singer, I'm also a listener and lover of music," she said.

Kent, who is fluent in French, has been preparing to record an album of all French songs, due for release next year. She says the album will be the realization of a lifelong dream as she grew up with a Francophone grandfather who made her memorize Baudelaire and Rimbaud "even before I knew what they meant."

"Poetry is so important to me. It's one of my reasons for being on the planet," she said.

PERFORMANCE NOTES:

WHAT: Summer Jazz Party with singer Stacey Kent
WHEN: Tonight at 7:30pm
WHERE: National Concert Hall (國家音樂廳), 21-1 Zhongshan S Rd, Taipei City (台北市中山南路21-1號)
ADMISSION: Tickets are sold out
ON THE NET: www.staceykent.com; myspace.com/staceykentmusic

EVENTS & ENTERTAINMENT

Theater

In **The Pursuit of White Deer (逐鹿)**, theater director and puppet maker Shi Pei-yu (石佩玉) uses handmade puppets, human actors with atmospheric lighting, chant and a 300-year-old Thao tribe (邵族) myth to create a piece about one modern-day man's journey of self-discovery.
■ Experimental Theater, Taipei City
■ Tonight at 7:30pm, tomorrow at 2:30pm and 7:30pm and Sunday at 2:30pm
■ Tickets are NT\$500, available through NTCH ticketing or online at www.artsticket.com.tw

Chun Mei Taiwanese Opera Troupe (春美歌劇團) looks back at China's Three Kingdoms period with a story about legendary warrior and military strategist Zhou Yu (周瑜) and his love affair with Xiao Qiao (小喬) in **Three Kingdoms — Zhou Yu (周瑜)**.
■ Novel Hall (新舞臺), 3-1 Songshou Rd, Taipei City (台北市松壽路3-1號)
■ Tomorrow and Sunday at 7:30pm
■ Tickets are NT\$500 to NT\$2,500, available through NTCH ticketing or online at www.artsticket.com.tw

The protagonist in Taiwanese novelist Chen Ying-chen's (陳映真) *The First Assignment* (第一件差事) is brought back to life in **Another Assignment (另一件差事)** by Assignment Theater (差事劇團). The play is directed by Chung Chiao (鍾喬) with artist and professor Mei Dean-E (梅丁衍) as stage designer and film director Lin Jing-jie (林靖傑) as an adviser.
■ Guling Street Theater (牯嶺街小劇場), 2, Ln 5, Guling St, Taipei City (台北市牯嶺街5巷2號)
■ Tonight at 7:30pm, tomorrow at 2:30pm and 7:30pm and Sunday at 2:30pm and 7pm
■ Tickets are NT\$350, available through NTCH ticketing or online at www.artsticket.com.tw

In **Dividing in the Moment (瀟水中)** by Mobius Strip Theater (莫比斯圈環劇作社), a man is paralyzed in a diving accident. The boundary between life and the dreamworld gradually blurs as he watches his wife, daughter, friends and strange women come and go, murmur and respond to each other in an increasingly fanciful manner.
■ Esote Bookstore, Tainan (台南誠品書店), B2, 181, Changjung St Sec 1, Tainan City (台南市長樂路一段181號B2)
■ Tonight and tomorrow at 7:30pm and Sunday at 2:30pm
■ Tickets are NT\$350, available through NTCH ticketing or online at www.artsticket.com.tw

Four years in the making, Tang Mei Yun Opera Troupe's (唐美雲歌仔戲團) latest production **Entwined Fates (宿怨浮生)** tells a tale of revenge and betrayal that spans three lives.
■ National Theater, Taipei City

■ Tonight and tomorrow at 7:30pm and Sunday at 2:30pm
■ Tickets are NT\$400 to NT\$3,000, available through NTCH ticketing or online at www.artsticket.com.tw

Classical music

100 Percent Chopin — Solo Recital by Chen Kuan-yu (蕭邦百分百 — 陳冠宇2009鋼琴獨奏會)
In a concert of works by Chopin, including *Ballade No. 1 in G Minor, Op. 23, Ballade No. 4 in F Minor, Op. 52, Scherzo No. 1 in B Minor, Op. 20, Scherzo No. 3 in C-Sharp Minor, Op. 39* and *Piano Sonata No. 3 in B Minor, Op. 58*.
■ Tomorrow (Hsinchu) and Thursday (Taipei) at 7:30pm
■ Performance Hall of the Bureau of Cultural Affairs, Hsinchu City (新竹市文化局演藝廳), 17, Dongda Rd Sec 2, Hsinchu City (新竹市東大路二段17號)
■ Tickets are NT\$200 to NT\$400 in Hsinchu and NT\$400 and NT\$800 for Taipei, available from ERA ticketing or online at www.ticket.com.tw

Erhu Kaleidoscope (二胡萬花筒) will see the Taipei Chinese Orchestra (臺北市立國樂團) and *erhu* (二胡) soloists Min Hui-fen (閔惠芬), Song Fei (宋飛) and Jiang Chian-hua (姜建華) perform traditional works.
■ Tomorrow at 7:30pm
■ Zhongshan Hall (台北市中山堂), 98 Yanping S Rd, Taipei City (台北市延平南路98號)
■ Tickets are NT\$300 to NT\$1,200, available through NTCH ticketing or online at www.artsticket.com.tw

A.K. Sun Taipei Philharmonic 2009 Fall Concert (2009秋季音樂會 中國情話vs俄羅斯浪漫) presents the Aikuang Sun Taipei Philharmonic (陽光台北交響樂團) conducted by Sun Aikuang (孫爰光) and featuring violinist Su Hsien-ta (蘇顯達) and pianist Joseph Banowetz. The program includes Tchaikovsky's *Nutcracker Suite* and the first movement of *Violin Concerto in D Major, Op. 35*, Britten's *A Ceremony of Carol*, Shostakovich's *Cello Concerto No. 2 in G Major, Op. 126*.
■ Tomorrow at 7:30pm
■ National Concert Hall, Taipei City
■ Tickets are NT\$300 and NT\$500, available through NTCH ticketing or online at www.artsticket.com.tw

Tribute to John Williams (向約翰·威廉斯致敬) sees the National Taiwan Symphony Orchestra (國立台灣交響樂團) performing under guest conductor Steven Reineke. The program includes Richard Strauss' *Fanfare From "2001 A Space Odyssey"* and *Selections from "Star Wars"* by John Williams.
■ Thursday at 7:30pm
■ National Concert Hall, Taipei City
■ Tickets are NT\$300 to NT\$1,600, available through NTCH ticketing or online at www.artsticket.com.tw

Contemporary

Pop-punk band **Punkhoo (胖虎)** takes the stage tomorrow at **The Wall (這牆)**. On Sunday the venue hosts **Penguin Bear Likes to Eat Chicken Balls (企鵝熊愛吃雞肉球)**, psychedelic alt-rock group **Flat Club (假文藝青年俱樂部)** and grunge band **The Capelin (柳葉魚)**. On Wednesday, neo-folk singer/guitarist **Enno Cheng (鄭宜農)** headlines a bill that also features experimental solo performer **Wang Yu-Chun (王榆鈞)** and **Come On! Bay Bay! (來吧塔塔)**, which has an indie-pop sound along the lines of Belle and Sebastian.
■ B1, 200, Roosevelt Rd Sec 4, Taipei City (台北市羅斯福路四段200號B1), Tel: (02) 2930-0162.
On the Net: www.thewall.com.tw
■ Music shows start at 8pm tomorrow, Sunday and Wednesday
■ Entrance fee is NT\$400 tomorrow, NT\$300 on Sunday and Wednesday.
■ Tickets can be purchased online by visiting www.thewall.com.tw or tickets.books.com.tw

Renowned fingerstyle guitarist Dang Don (黃運昌) puts on a solo show tonight at **Witch House (女巫店)**. Following Dong's show is another acoustic performer, **Koumis (痞團)**. Tomorrow it's indie-rockers **Neon**, led by charismatic singer/songwriter Jun Lee (李昀堯).
■ 7, Ln 56, Xinsheng S Rd Sec 3, Taipei City (台北市新生南路三段56巷7號), Tel: (02) 2362-5494.
On the Net: www.witchhouse.org
■ Performances start at 9:30pm. Restaurant/bar with queer/feminist bookstore and large collection of board games open 11am to midnight Sundays through Wednesdays; 11am to 1am Thursdays through Saturdays
■ Entrance fee for music shows is NT\$300

Veteran jazz combo **JEG (邁爾士樂團)** plays standards, Latin, funk, rock and fusion tonight at **Riverside Cafe (河岸留聲)**. Tomorrow it's Mando-pop singer **Queenie (方有心)** and pop pianist and vocalist **Si Han (思涵)**. On Sunday an up-and-coming female duo, **Heiniu and Bainiu (黑妞與白妞)**, opens for folk-pop singer **Europa Huang (黃建華)**. On Monday, Riverside Cafe hosts its weekly open jam.
■ B1, 2, Ln 244, Roosevelt Rd Sec 3, Taipei City (台北市羅斯福路三段244巷2號B1), next to Taipower Building (台電大樓), Tel: (02) 2368-7310. On the Net: www.riverside.com.tw
■ Shows start at 9:30pm tonight and 9pm tomorrow, on Sunday and on Monday. Open jam starts at 9pm. For a list of standard songs and ground rules, visit the venue's Web site
■ Entrance fee is NT\$400 tonight and tomorrow, NT\$350 on Sunday and NT\$150 on Monday

Tonight **Riverside Live House (西門紅樓展演館)** hosts aspiring pop singer

Queen (魏如昀), the younger sister of indie-pop chanteuse **Waa Wei (魏如暈)**, and rock band **Cherry Boom (櫻桃幫)**. Goofy rocker **A Chord (謝和弦)** and indie rock band **The Little** play tomorrow. On Thursday, it's male-female pop duo **JS**.
■ 177 Xining S Rd, Taipei City (台北市西寧南路177號), Tel: (02) 2370-8805. On the Net: www.riverside.com.tw
■ Shows start at 8:30pm tonight, tomorrow and on Thursday
■ Entrance fee is NT\$400 tonight, tomorrow and on Thursday. Tickets can be purchased online through www.riverside.com.tw/livehouse or tickets.books.com.tw

Tonight **Underworld (地下社會)** presents a screening of new Taiwanese film **A Place of One's Own (一席之地樂園)**, with a party afterwards. Performers include indie-pop band **Lucky Q** and singer **Sissey Chao (趙一豪)**, who sounds like Jim Morrison singing in Mandarin, and his band **Double X**. Tomorrow it's **Red Flower (紅花)** and loud rockers **Shi Zhen (十震)**. **Homework (轟沃克)** and **Little Dogs, Special Price (特價小狗)** perform on Wednesday.
■ B1, 45 Shida Rd, Taipei City (台北市師大路45號B1), Tel: (02) 2369-0103. On the Net: www.upsaid.com/underworld
■ Music shows run from 9:30pm to 11:30pm on Fridays and on Saturdays and 9pm to 11pm on Wednesdays. Underworld is open daily from 9pm, closed on Mondays. Happy Hour on Tuesdays and Thursdays before midnight
■ Entrance is NT\$300 tonight and tomorrow and includes one drink, NT\$100 on Wednesday

Cool Jazz Contraption puts on a jazzy "chill-out vibe" tonight at **Sappho de Bass** tonight. Tomorrow it's the **Kenyatta Quartet**, a blues, rock and reggae revue led by New Orleans drummer and singer **Nbugu Kenyatta**. On Tuesday, **Kevin's Jazz Quartet** plays "Wes Montgomery-meets-John Coltrane Style" jazz, and Wednesday features the venue's **Jazz Friends** performing on unconventional instruments like the trombone, tenor guitar and congas.
■ B1, 1, Ln 102, Anhe Rd Sec 1, Taipei City (台北市安和路一段102巷1號B1), Tel: (02) 2700-5411. On the Net: www.sappho102.biz
■ Music shows begin at 10:30pm on weekends, 10pm on weekdays. Sappho is closed on Sundays and Mondays
■ Entrance is free

Every Wednesday night at the **Cosmopolitan Grill** there's an open mic hosted by keyboardist Andrew Page, with the music mainly covering blues and jazz. All are welcome to join in, and participants receive 20 percent off drinks.
■ 1F, 218 Changchun Rd, Taipei City (台北市長春路218號1樓), Tel: (02) 2508-0304. On the Net: www.cosmo.com.tw

■ 8:30pm to 11pm on Wednesday
■ No entrance fee

EZ5 Live House hosts Mando-pop singers backed by a live band every night. Highlights this week include **Julia Peng (彭佳慧)**, a major draw who appears every Tuesday. Pawai singer **Matzka**, who plays reggae and rock with a strong Taiwanese flavor, has recently taken residence at the venue. He plays on Monday nights from 11pm to midnight.
■ 211, Anhe Rd Sec 2, Taipei City (台北市安和路二段211號), Tel: (02) 2738-3995. On the Net: visit www.ez5.com.tw
■ Music shows run from 9:45pm to 12:30am
■ Entrance fee (includes two drinks) ranges from NT\$600 to NT\$850, depending on the performer

Franz and Friends (城市舞台藝文沙龍), an upscale restaurant and performance space in Taipei's East District (東區), hosts music shows every night. The music tends to play it safe, ranging from wistful love songs and opera to lounge jazz. Weekly highlights include **Denise Juan (阮丹青)**, a former pop singer turned piano teacher and television presenter, and her band **Sunshine Costa**. They play tonight. Tomorrow it's **Buona Sera**, featuring soprano **Chang Hsiaon-i (張曉倪)**.
■ 25, Bade Rd Sec 3, Taipei City (台北市八德路三段25號B3), Tel: (02) 2579-0558. On the Net: www.franzandfriends.com.tw
■ Minimum charge of NT\$300 on Fridays and on Saturdays. On other nights there's a one-drink minimum

The Other Side, Roxy's "party-until-the-sun-comes-up" nightclub in the East District, no longer opens on Sundays and Thursdays. Wednesday night is "Indie Rock Ladies night." House DJs spin danceable rock 'n' roll, hip-hop and pop on Fridays and Saturdays.
■ B1, 20, Songshou Rd, Taipei City (台北市松壽路20號B1), Tel: (02) 2723-3257. On the Net: www.roxy.com.tw
■ Open on Wednesdays from 10pm until 4am, and on Fridays and on Saturdays from 10pm until 7:30am
■ Cover charge for women is NT\$300, except Wednesdays, when women get in free. Cover charge for men is NT\$400 on Wednesdays and on Fridays and on Saturdays before 1am. After 1am on weekends cover charge for men is NT\$500. All cover charge fees include one drink

Roxy Roots, a bar and restaurant dedicated to reggae and blues fans, hosts New Orleans funk and rock group **The Kenyatta Quartet** tonight. Tomorrow is Latin night, with live band **Taipei Latin Soul** and DJs **Cola** of Peru and **Raby Doo** of Belize. There will be free salsa lessons throughout the evening.
■ 90 Songren Rd, Taipei City (台北市松仁路90號), Call (02) 2725-3932 or visit www.roxy.com.tw
■ Show starts at 10pm tonight and tomorrow
■ Entrance to both events is free

THE VINYL WORD

BY TOM LEEMING



The night is but young.

PHOTO EPA

If you don't know that the legendary group **Underworld** performs here tomorrow, then you probably shouldn't be going, and let someone who cares try getting one of the gold dust tickets. However, what you should know is that the party doesn't finish once the British duo does: Tomorrow night is after-party heaven in Taipei.

In partnership with man-about-town Tommy Milloy, **Shawn Kidd** this weekend embarks on a new venture with **Fly at Cockey** from 4am to 8am on Sunday.

"Parties have nearly always been run by DJs in Taipei," said Kidd. "So I think bringing Tommy into SPIKED promotions adds a fresh point of view to things."
"Cocky bar is an industry bar," said Milloy. "A spot for people in the service industry to become the customer. That's what makes the bar cool to me as it's the spot where my bartender goes for a drink and a dance."

"Being a new bar to the scene," said Kidd, "it doesn't have any bad connotations from the beginning to scare any one group off. [It's] a clean place [where] even the hotties can feel at home."
"The music will be mostly a mash-up of dance-rock, hip-hop, breaks and dubstep," said Kidd, "with all kinds of other genres in the mix."

One of the most in-demand DJs around right now is on the lineup for the opening night. "I was ecstatic when local champ **Spykee** said he would do our first party," said Milloy. "Spykee is one of the pioneers of the dance-rock scene in Taipei," said Kidd.

Although having branched out into in drum 'n' bass, **Spykee** is versatile, like many other DJs here. "What we're seeing now," said Kidd, "is just a fusion of all the other genres ... bringing the divided music sides together."
Edify joins **Spykee** on the decks for **Fly**'s debut.

Next week at **Fly**, **Kid**, **Luxy**'s resident hip-hop DJ opens proceedings, followed by **Shawn Kidd**, aka vDub, who is the night's resident DJ. Expect everything from 1980s remix classics to "the dark and dirty side," said Kidd.

Should you still be feeling the love after seeing **Underworld**, or taking off somewhere else tomorrow night, there are worse places to be than **Fly** come 4am on Sunday. **Fly**, Sunday from 4am until 8am at Cockey, B1, 26-3, Renai Rd Sec 3, Taipei City (台北市仁愛路三段26-3號B1). Admission is NT\$300, which includes a drink.

If the above doesn't tickle your nether regions, **The Other Side** is throwing an **Underworld** after-party. Though billed as **the Underworld** after-party, the outfit best known for **Born Slippy (NUXX)** will probably not be making an appearance to play indie, alternative or rock, the mainstays of this venue.

Underworld Afterparty, tomorrow from 11pm to 8am at **The Other Side**, B1, 20 Songshou Rd, Taipei City (台北市松壽路20號B1). Admission is NT\$150 for girls and NT\$250 for boys. A 50-percent discount is available for holders of an **Underworld** concert ticket stub.